

Procurement of Security Features, Enhancement and Application Support/Maintenance of Internal Revenue Stamps Integrated System (IRSIS) for Tobacco (PB-18-19)
13 September 2019

Additional Provision in Section VII. Technical Specifications
Annex “A-3” – Process Flow on Ordering and Distribution of Stamps, Process Flow on Spoilage/Replacement, and Process Flow on Removal

```

graph TD
    subgraph Tobacco_Manufacturer [Tobacco Manufacturer]
        Start([Start]) --> Order[Order stamps on-line from BIR (by class)]
        Order --> BIR
        B --> MakeDeposit[Make additional deposit thru EFPS]
        MakeDeposit --> BIR
        A --> PayCost[Pay printing cost To APO]
        PayCost --> BIR
        ViewApproved[View on-line approved request] --> Receive[Receive stamps]
    end

    subgraph BIR [BIR]
        IRSIS[IRSiS computes estimated excise tax due based on the number of stamps ordered] --> Process[Process data on the sufficiency of deposit balance]
        eFPS[(eFPS)] -- "Extract/upload balance" --> Process
        Process --> Deposit{Deposit enough? (excise tax payment account)}
        Deposit -- no --> RequireTP[Require TP for additional deposit]
        RequireTP --> InformTP1[Inform TP on-line]
        InformTP1 --> B
        Deposit -- yes --> LTS[LTS approves request for printing of stamps]
        LTS --> InformTP2[Inform TP on-line]
        InformTP2 --> ViewApproved
        LTS --> SendRequest[Send request to APO]
        SendRequest --> APO
    end

    subgraph APO_Production_Unit [APO Production Unit, Inc. (Printer) / Winning Bidder]
        ReceiveBIR[Receive BIR request] --> Production[Production of stamps]
        Production --> Validation{Payment Validation of printing cost}
        Validation -- no --> A
        Validation -- yes --> Release[Release printed stamps]
        Release --> Record[Record deliveries]
        Record --> ViewDeliveries[View deliveries online]
        ViewDeliveries --> Receive
    end
  
```

The flowchart illustrates the process for ordering and receiving stamps, involving three main entities: Tobacco Manufacturer, BIR (Internal Revenue Service), and APO Production Unit, Inc. (Printer) / Winning Bidder.

Tobacco Manufacturer Process:

- Start
- Order stamps on-line from BIR (by class)
- Make additional deposit thru EFPS (Triggered by B)
- Pay printing cost To APO (Triggered by A)
- View on-line approved request
- Receive stamps

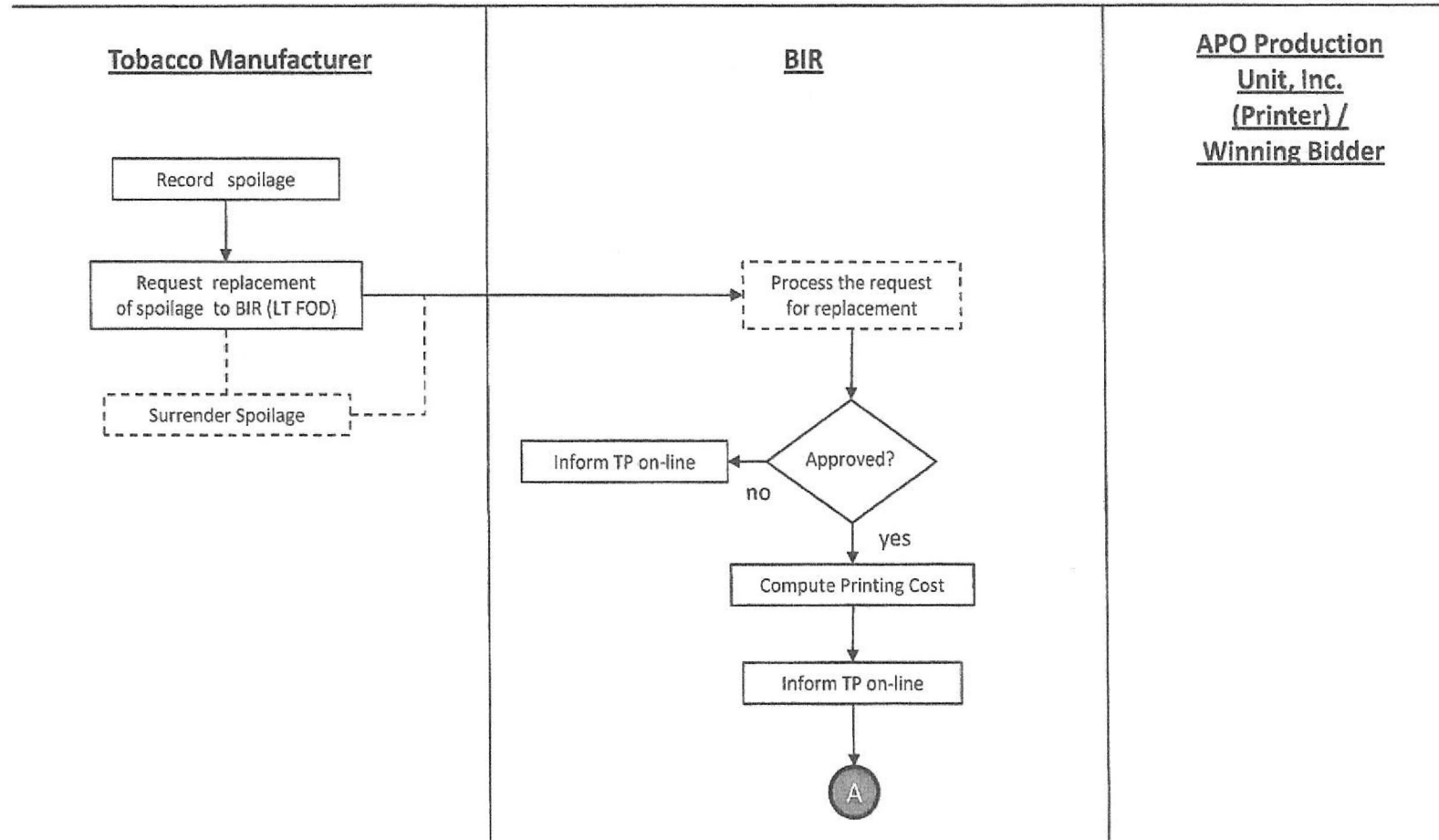
BIR Process:

- IRSiS computes estimated excise tax due based on the number of stamps ordered
- Process data on the sufficiency of deposit balance (Receives data from eFPS via "Extract/upload balance")
- Decision: Deposit enough? (excise tax payment account)
 - If **no**: Require TP for additional deposit → Inform TP on-line → B
 - If **yes**: LTS approves request for printing of stamps → Inform TP on-line → View on-line approved request
- Send request to APO

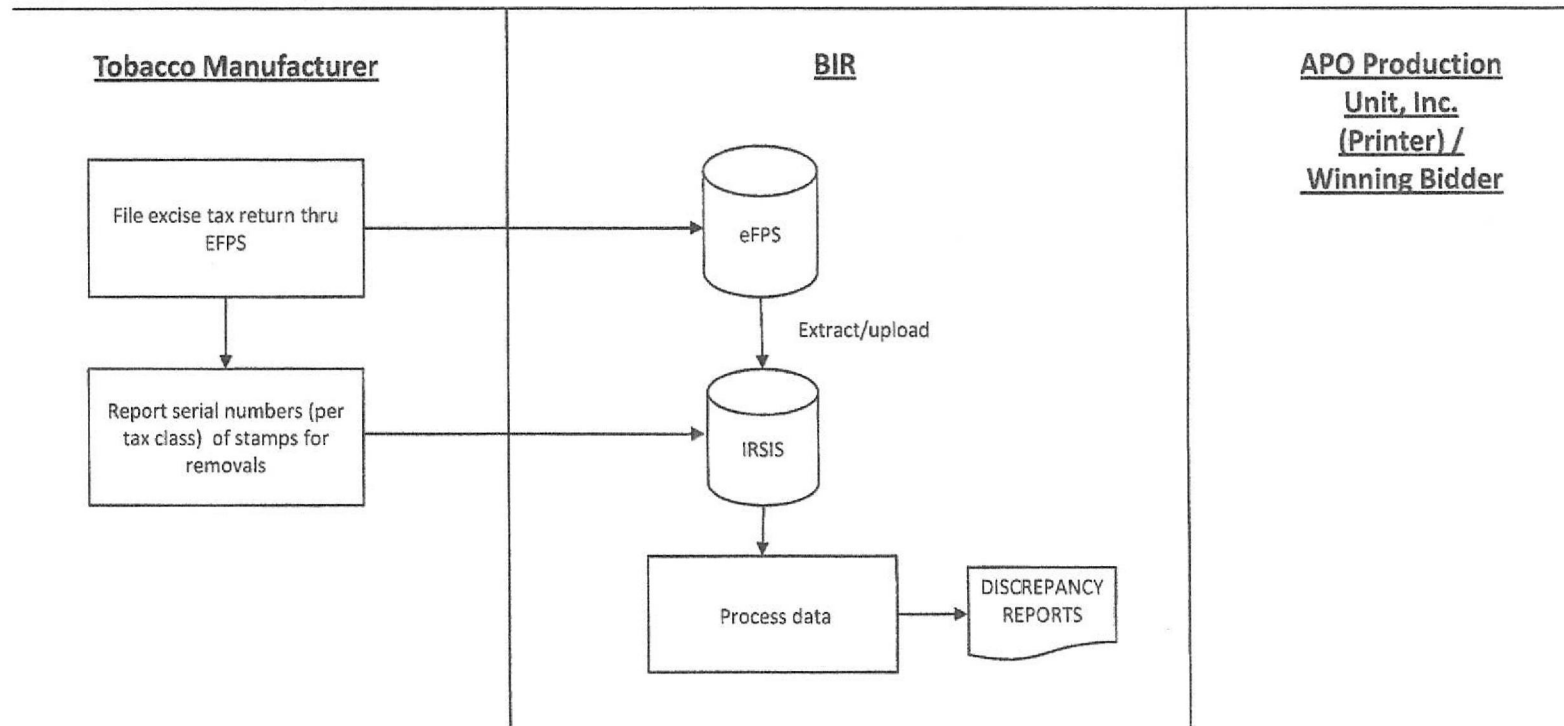
APO Production Unit, Inc. (Printer) / Winning Bidder Process:

- Receive BIR request
- Production of stamps
- Decision: Payment Validation of printing cost
 - If **no**: A
 - If **yes**: Release printed stamps
- Record deliveries
- View deliveries online

Internal Revenue Stamps for Cigarettes PROCESS FLOW ON SPOILAGE/REPLACEMENT



Internal Revenue Stamps on Cigarettes PROCESS FLOW ON REMOVALS



Prepared By:

SGD.
MS. MA. MERLA D. ESCOBAR
Head, BAC Secretariat

Recommended By:

SGD.
MR. JOSELITO RABULAN
Head, TWG

Noted By:

SGD.
MR. SCOTT PRICE ATAYDE
End-User Representative

Approved By:

SGD.
MR. KARL PAULO C DAMIAN
Chairperson, BAC